

5/8" STAINLESS STEEL "BAND-IT" BAND & BUCKLE OR EQ., 2 REQ.

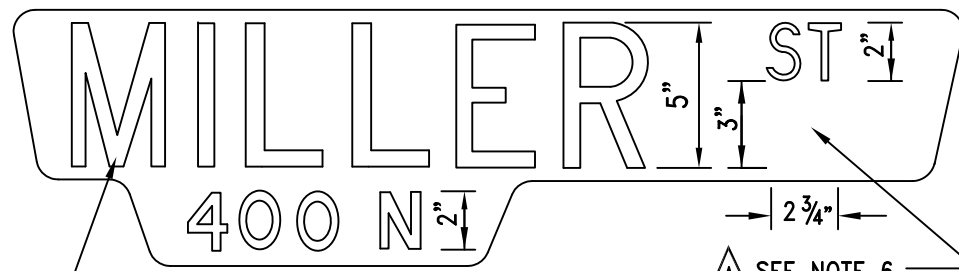
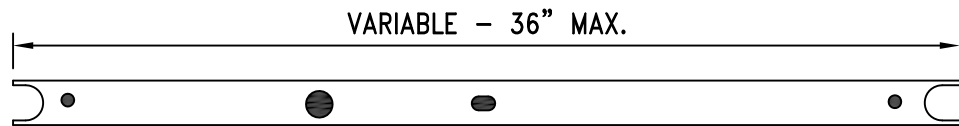
2" x 9"-12GA. GALV. CHANNEL

PORCELAIN SIGN (NOT SHOWN)
REQ. WESTERN HIGHWAY PRODUCTS
CO. NO. P9-OC OR EQ.

SEALTITE SCREW, 2 REQ. WESTERN
HIGHWAY PRODUCTS CO. NO. 14x3/4
OR EQ.

SIDEARM BRACKET, WESTERN HIGHWAY
PRODUCTS CO. NO. 2 NSAB OR EQ.

BRACKET ASSEMBLY DETAIL
(2 WAY ASSEMBLY)

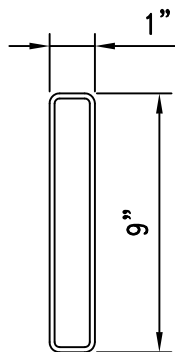
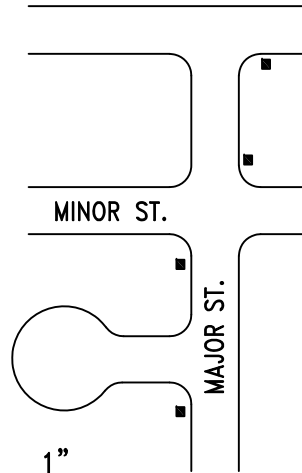


SIGN DETAIL

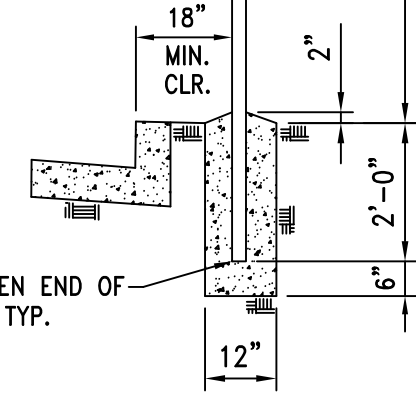
▲ SEE NOTE 6.

NOTES:

1. LOCATION SHALL BE AS DESIGNATED BY THE CITY ENGINEER. NORMAL LOCATION IS AT END OF CURB RETURN, AS SHOWN BELOW.
2. SAWCUT REQUIRED IF SIGN IS INSTALLED AFTER SIDEWALK IS POURED.
3. WHEN SET IN SIDEWALK AREA, POLES WILL BE SET PRIOR TO SIDEWALK POUR.
4. INSTALLATION SHALL COMPLY WITH CITY OF SANTA MARIA STANDARD SPECIFICATION FOR MATERIALS AND INSTALLATION OF STREET NAME AND BLOCK NUMBER SIGNS.
5. FOR LOCATIONS ON STATE HIGHWAY'S, CALTRANS STD. PLAN RS1 (LATEST REVISION) SHALL BE USED.
6. THE "PURPLE HEART" DESIGNATION SHALL BE INSTALLED ON ONLY SIGN APPROVED BY AND PER DETAILS FROM THE CITY ENGINEER

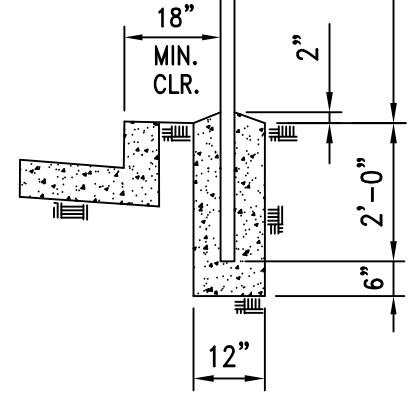


2" I.D. SCH.40 GALV. PIPE, 11'-0" LONG

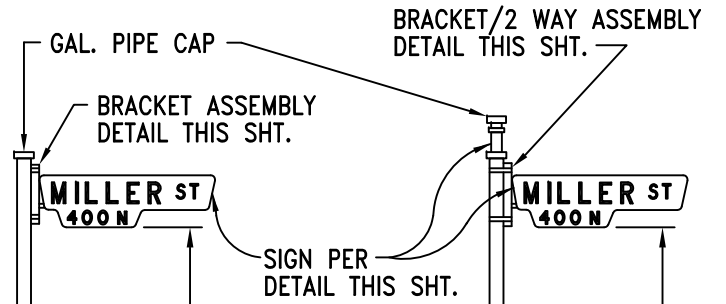


SINGLE SIDE MOUNT

2" I.D. SCH.40 GALV. PIPE, 12 FT. LONG



2 WAY MOUNT



RICHARD G. SWEET R.C.E. 44,213 EXP. 6/30/07		7/18/05	
REVISIONS		BY	DATE
▲	PURPLE HEART ST. APPV'L	CjP	10/15
DRAWN BY: H.P.		DATE DRAWN: 7/72	



**City of Santa Maria
City Standards**

DESCRIPTION:
**STREET NAME & BLOCK
NUMBER SIGN**

STANDARD NUMBER
RD-39A

PORCELAIN ENAMEL ON 16 GA. ENAMELING IRON FABRICATED FROM ONE PIECE OF METAL, DIE STAMPED, FORMED AND SEAM WELDED INTO A RUGGED TUBULAR DOUBLE FACE SIGN, LETTERING TO BE REFLECTORIZED WITH PERMANENT HIGH REFLECTIVE PORCELAIN BEADS OR 3M SCOTCHLITE VIP DIAMOND GRADE REFLECTIVE SHEETING, WHITE LETTERS ON GREEN BACKGROUND. WESTERN HIGHWAY PRODUCTS CO. NO. P9-OC OR EQUAL.