
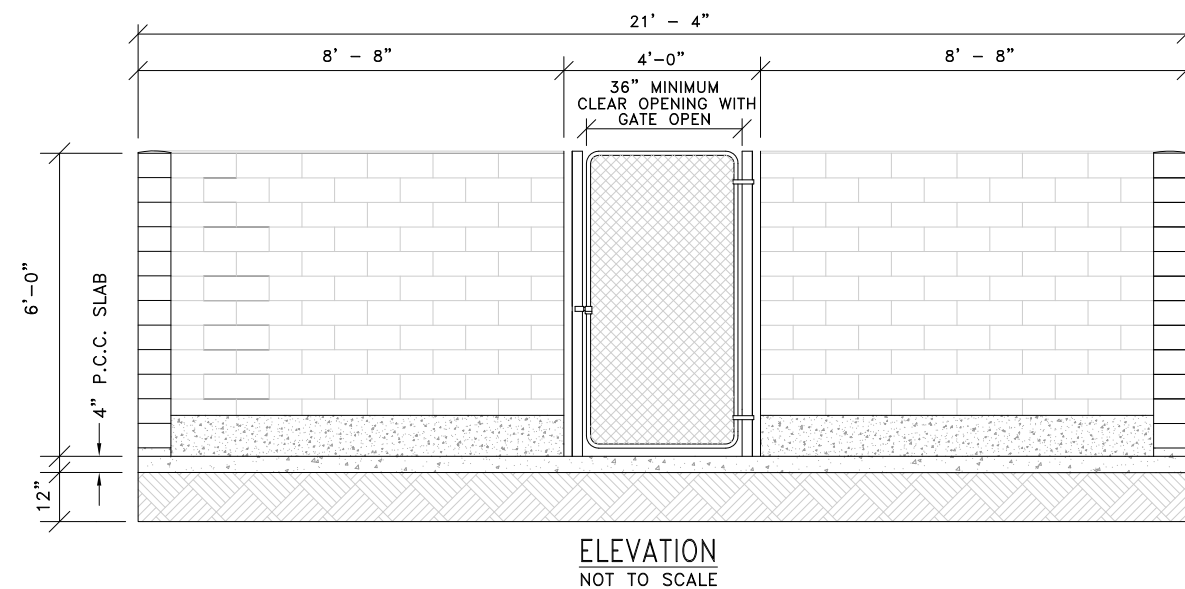
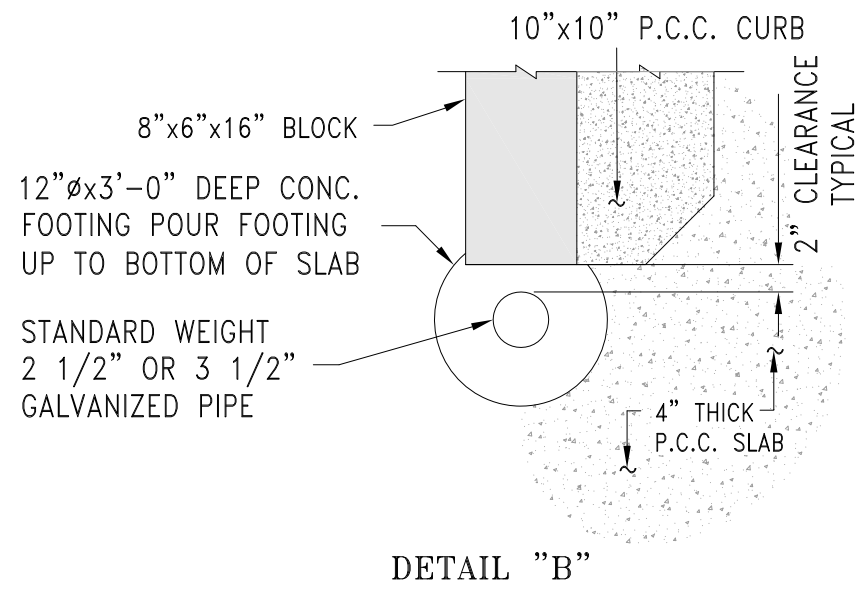
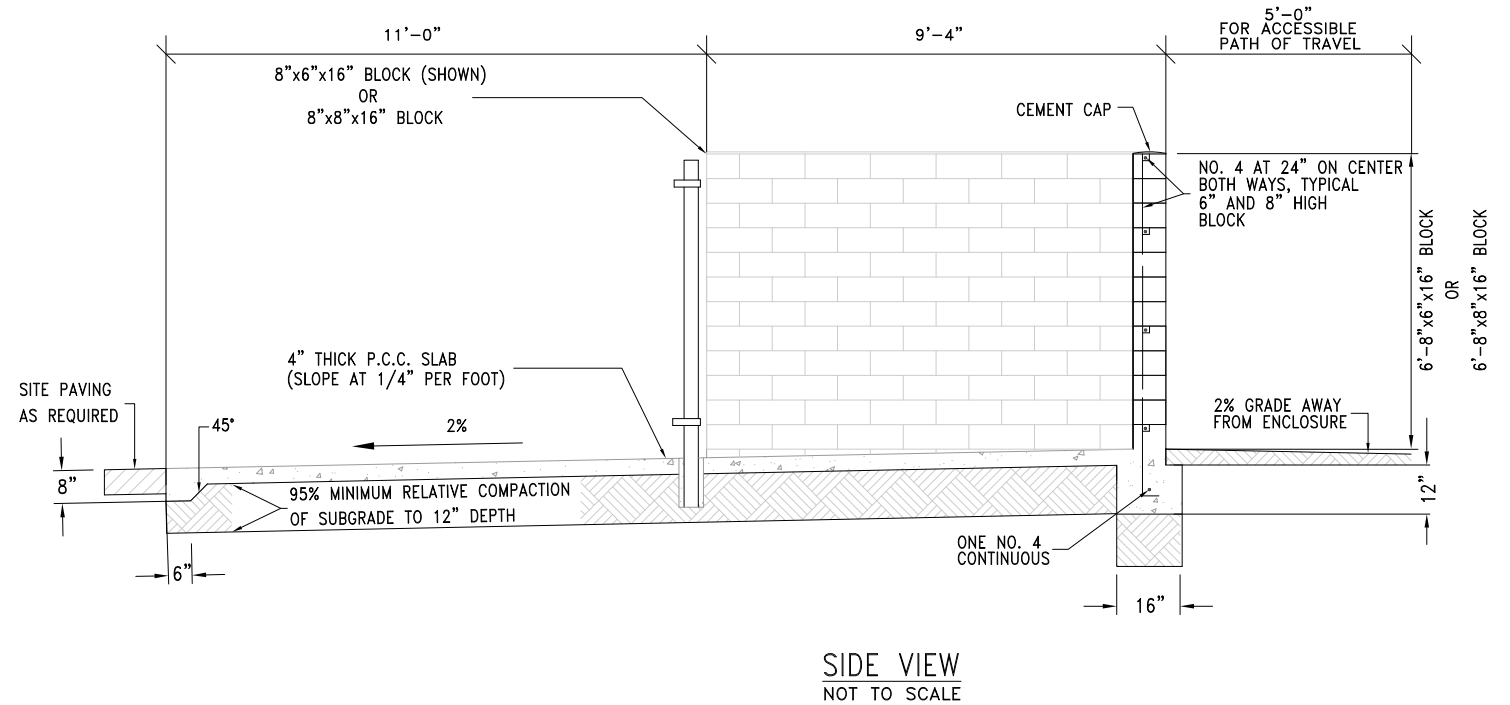
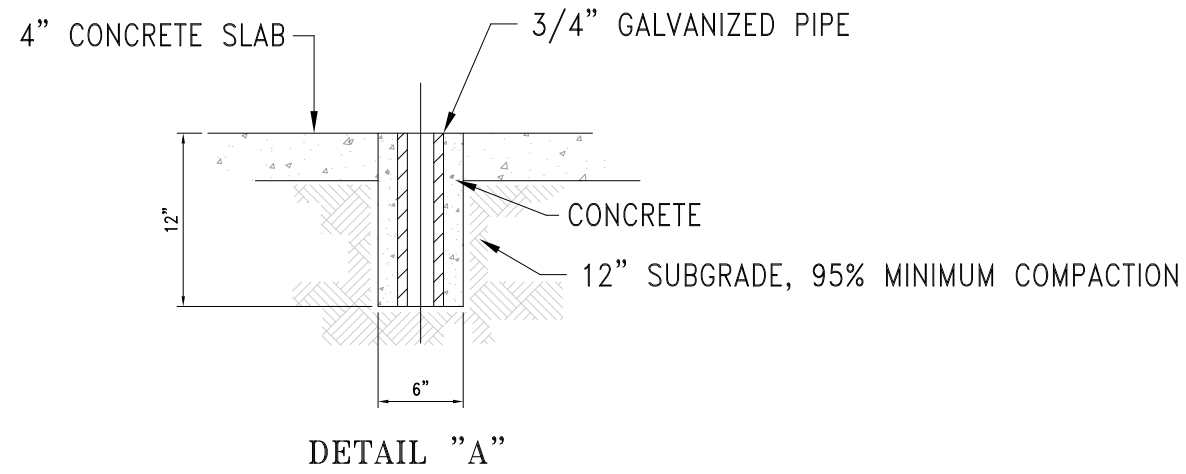



NOTES: (SEE ADDITIONAL NOTES ON SHEET 3)

- CONTRACTOR TO PROVIDE AND INSTALL CITY APPROVED WOOD GATE, METAL DOOR-HINGES, LATCHES AND LOCKS.  
CONTRACTOR TO SUBMIT PACKAGE FOR APPROVAL PRIOR TO INSTALLATION.

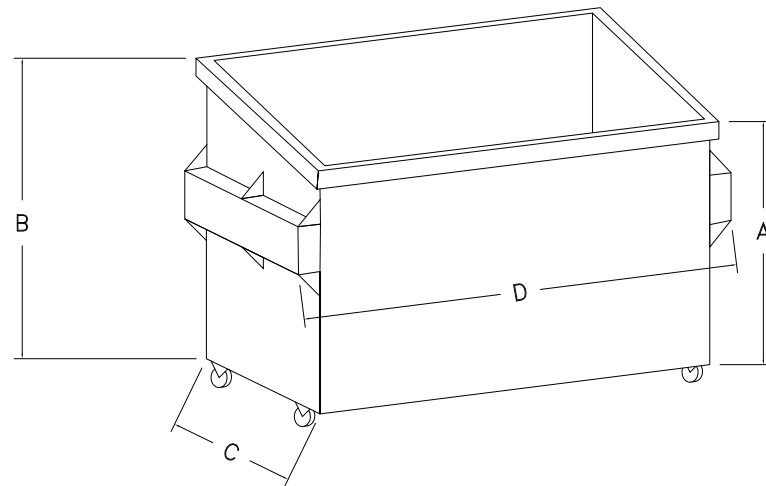
<i>Steven B. Kahn</i> STEVEN B. KAHN R.C.E. 42350 EXP. 3/31/2015		07/28/2016 DATE			City of Santa Maria Standard Drawing	
REVISIONS			BY	APP	DATE	DESCRIPTION: <b>TRASH ENCLOSURE          FOR TWO CONTAINERS</b>
DRAWN BY: MM			DATE DRAWN: 07/16		SCALE: NONE	STANDARD NUMBER <b>MS-16</b>
						SHEET 1 OF 3



<i>Steven B. Kahn</i> STEVEN B. KAHN R.C.E. 42350 EXP. 3/31/2015		07/28/2016 DATE			City of Santa Maria Standard Drawing	
REVISIONS		BY	APP		DATE	DESCRIPTION: <b>TRASH ENCLOSURE          FOR TWO CONTAINERS</b>
DRAWN BY: MM		DATE DRAWN: 07/16		SCALE: NONE		SHEET 2 OF 3

## GENERAL NOTES

1. MASONRY BLOCK SIZE AND TYPE, (E.G. PRECISION, SPLITFACE, SLUMP, ETC.) PROPOSED FOR CONSTRUCTION SHALL BE APPROVED BY COMMUNITY DEVELOPMENT DEPARTMENT PRIOR TO ISSUANCE OF BUILDING PERMIT.
2. LOCATION OF ENCLOSURE(S) ON SITE SHALL BE APPROVED BY SOLID WASTE MANAGER PRIOR TO ISSUANCE OF BUILDING PERMIT.
3. GROUT ALL CELLS SOLID.
4. PROVIDE CLEAN-OUT OPENINGS AT THE BOTTOM OF ALL CELLS. OPENINGS ALLOWED ON INTERIOR FACES OF TRASH ENCLOSURES ONLY.
5. TOP LIFT OF GROUT SHALL BE PLACED APPROXIMATELY ONE INCH (1") BELOW TOP OF THE WALL TO PROVIDE FOR CEMENT MORTAR CAP.
6. GATE FRAMES, FABRIC AND FITTINGS AS PER CITY STANDARD DRAWING (BARRICADE AND FENCE) AND STANDARD SPECIFICATION (STREET BARRICADE AND CHAIN LINK FENCE).
7. NUMBER OF GATES TO BE INSTALLED, EITHER SINGLE OR DOUBLE OPENING, PLUS ANY PROPOSED DEVIATIONS FROM THESE STANDARDS WILL BE CONSIDERED AT TIME OF BUILDING PLAN CHECK. COMMENTS WILL BE NOTED ON THE PLANS AND LISTED ON COMMENTS SHEET.
8. IF TWO GATES ARE REQUIRED, THEY ARE TO OPEN FROM THE MIDDLE AND BE ABLE TO LOCK IN EXTENDED POSITION. FOLLOW DETAILS AS SHOWN HEREON.
9. ADDITIONAL CONCRETE PAD(S) REQUIRED IF DIRECT FORK-IN ACCESS IS NOT AVAILABLE.



SIZE	FRONT HEIGHT	BACK HEIGHT	WIDTH	LENGTH
	A*	B*	C	D
1.5 YD	29.5"	34.5"	29.5"	81"
2 YD	34.5"	41.5"	34.5"	81"
3 YD	41.5"	50.5"	41.5"	81"
4 YD	46"	57"	50.5"	81"

\* CASTERS ADD 8" TO HEIGHT

### PITCH TOP FRONT LOADER CONTAINER DIMENSIONS


DIMENSIONS ARE SUBJECT TO CHANGE

## MATERIALS

1. CONCRETE BLOCK SHALL CONFORM TO GRADE N HOLLOW LOAD-BEARING LIGHT WEIGHT UNITS, ASTM C90 UNITS SHALL BE 8"x8"x16" OR 6"x8"x16" BLOCK AS APPROVED BY COMMUNITY DEVELOPMENT DEPT.
2. REINFORCING STEEL SHALL CONFIRM TO ASTM A615, GRADE 40.
3. WATER SHALL BE CLEAN AND FREE FROM DELETERIOUS AMOUNTS OF ACIDS, ALKALIS OR ORGANIC MATERIALS.
4. PORTLAND CEMENT SHALL CONFORM TO ASTM C-150, TYPE II, LOW ALKALI MILL TESTED.
5. HYDRATED LIME SHALL CONFIRM TO ASTM C201, TYPE S.
6. AGGREGATE FOR MASONRY MORTAR SHALL CONFORM TO ASTM C144.
7. AGGREGATE FOR GROUT SHALL CONFORM TO ASTM C404.
8. CONCRETE FOR FOOTINGS, CURBS, AND FLATWORK SHALL BE CLASS "A" 6 SACK PER CITY STANDARD SPECIFICATION FOR STRUCTURAL CONCRETE.

## PROPORTIONS

1. MORTAR SHALL CONFORM TO TYPE S OF THE UNIFORM BUILDING CODE AND SHALL BE COMPOSED OF ONE PART PORTLAND CEMENT TO 3 1/2 PARTS SAND, NOT LESS THAN 1/4 NOR MORE THAN 1/2 PART HYDRATED LIME; ALL PARTS BY VOLUME OF PORTLAND CEMENT USED.
2. MINIMUM MORTAR STRENGTH SHALL BE 1,800 PSI AT 28 DAYS.
3. GROUT SHALL BE COMPOSED OF ONE PART PORTLAND CEMENT, THREE PARTS CONCRETE SAND, AND TWO PARTS 3/8" PEA GRAVEL. GROUT SHALL TEST TO 2,000 PSI AT 28 DAYS.

<i>Steven B. Kahn</i> STEVEN B. KAHN R.C.E. 42350 EXP. 3/31/2015		07/28/2016 DATE			City of Santa Maria Standard Drawing	
REVISIONS		BY	APP	DATE	DESCRIPTION: TRASH ENCLOSURE FOR TWO CONTAINERS	
DRAWN BY: MM		DATE DRAWN: 07/16		SCALE: NONE		STANDARD NUMBER MS-16
						SHEET 3 OF 3