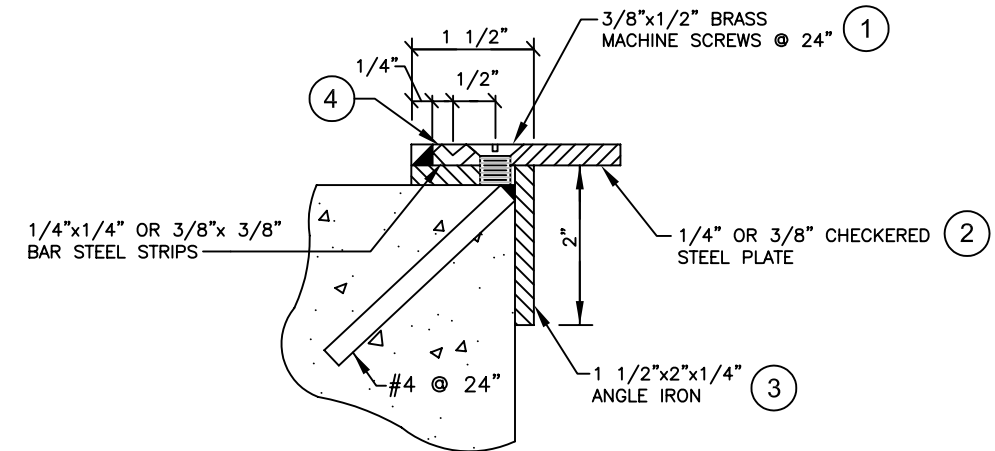
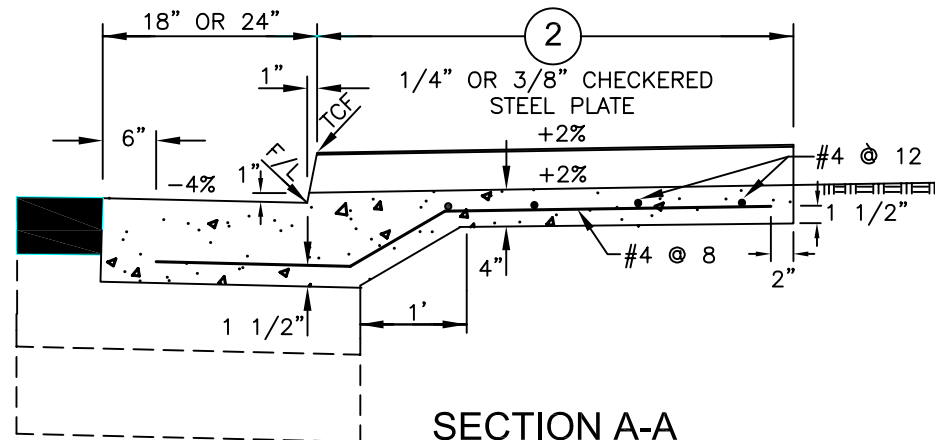


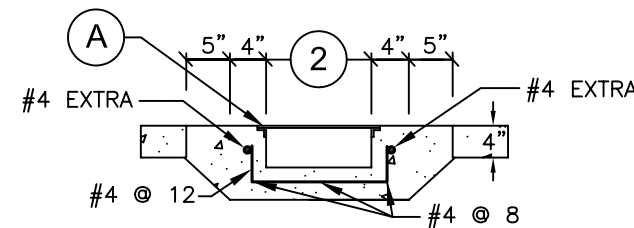
PLAN VIEW



DETAIL A



SECTION A-A


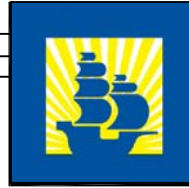


SECTION B-B

NOTES:

1. FLATHEAD BRASS MACHINE SCREWS 3/8"x1/2". HOLES SHALL BE DRILLED AND TAPPED IN THE FIELD AT INTERVALS NOT TO EXCEED 2' CENTER TO CENTER.
2. CHECKERED STEEL COVER PLATES ARE TO BE 1/4" WHEN WIDTH IS 2' OR LESS AND 3/8" WHEN WIDTH IS GREATER THAN 2' (MAX. WIDTH = 3.5'). WHEN LENGTH IS 6.5' OR LESS, PLATE IS TO BE ONE PIECE. WHEN LENGTH IS GREATER THAN 6.5', COVER PLATE SHALL BE SUPPLIED IN TWO EQUAL LENGTHS.
3. ANGLE IRON SUPPORT BRACKET SHALL BE FABRICATED FROM 1 1/2"x2"x1/4" MATERIAL, WELD #4 BARS 2" LONG @ 24" TO THE ANGLE IRON AS ANCHORS.
4. BAR STEEL STRIPS, 1/4"x1/4" OR 3/8"x3/8" SHALL BE TACK WELDED TO THE ANGLE IRON AT 12" INTERVALS.
5. PROVIDE A 1" LIP AT THE FLOW LINE AS SHOWN.

6. ALL CONCRETE TO BE CLASS A.
7. THE FLOW LINE OF GRADED V DITCHES SHALL HAVE A MINIMUM FLARE OF 5'.
8. THE CHECKERED STEEL COVER PLATES AND THE SUPPORT BRACKETS SHALL BE GALVANIZED AFTER FABRICATION.

		12/01/05 DATE			City of Santa Maria Standard Drawing	
RICHARD G. SWEET R.C.E. 44,213 EXP. 6/30/07		REVISIONS		BY APP DATE		DESCRIPTION: SIDEWALK DRAIN - CHANNEL
DRAWN BY: C.S.B.		DATE DRAWN: 5/82		SCALE: NONE		STANDARD NUMBER DR-12
						SHEET 1 OF 1