

**50' OR UNDER**

PIPE SLEEVE AND SKID CHART					
SIZE OF PIPE	SLEEVE SIZE	SLEEVE THICKNESS	NO. OF SKIDS/JT.	SKID SIZE	DEGREE OFF C
6"	14"	3/16"	4	2" x 4"	30°
8"	16"	3/16"	4	2" x 4"	30°
10"	22"	1/4"	4	4" x 4"	30°
12"	24"	1/4"	4	4" x 4"	30°
14"	26"	1/4"	4	4" x 4"	30°
16"	28"	5/16"	4	4" x 4"	30°
18"	32"	5/16"	4	4" x 4"	30°
20"	34"	5/16"	4	4" x 4"	30°

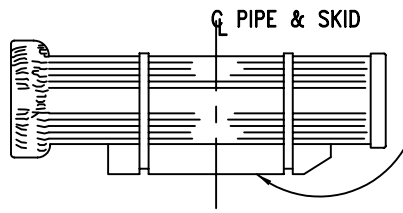
**NOTES:**

1. PLACE SKID AT EACH END OF THE PIPE WITH BEVELED END IN DIRECTION THAT PIPE IS TO BE SLID. REDWOOD, CONSTRUCTION HEART GRADE, S4S, 2"x4" & 4"x4" OR SIZE AS SHOWN.
2. GREASE SKIDS W/NEW HEAVY DUTY GREASE.
3. FILL ALL VOIDS IN SLEEVE W/CLEAN CONCRETE SAND.
4. STEEL SLEEVE SHALL CONFORM TO ASTM GRADE A36-62T W/20 COPPER; SIZE & THICKNESS TO BE AS SHOWN IN TABLES.

**OVER 50' LONG**

V.C. SEWER PIPE SLEEVE CHART (50' OR UNDER) *		
SIZE OF V.C. PIPE	SLEEVE SIZE O.D.	GAUGE
6"	16"	1/4"
8"	18"	1/4"
10"	22"	5/16"
12"	24"	5/16"
15"	28"	3/8"
18"	32"	3/8"
21"	36"	3/8"
24"	40"	3/8"
27"	44"	3/8"
30"	48"	1/2"


PIPE SLEEVE AND SKID CHART					
SIZE OF PIPE	SLEEVE SIZE	SLEEVE THICKNESS	NO. OF SKIDS/JT.	SKID SIZE	DEGREE OFF C
6"	14"	3/16"	8	2" x 4"	30° & 90°
8"	16"	3/16"	8	2" x 4"	30° & 90°
10"	22"	1/4"	8	4" x 4"	30° & 90°
12"	24"	1/4"	8	4" x 4"	30° & 90°
14"	26"	1/4"	8	4" x 4"	30° & 90°
16"	28"	5/16"	8	4" x 4"	30° & 90°
18"	32"	5/16"	8	4" x 4"	30° & 90°
20"	34"	3/8"	8	4" x 4"	30° & 90°



2 EA-4"x4" SKIDS FOR 18" & SMALLER.  
 2 EA-6"x6" SKIDS FOR 21" & LARGER.  
 SKIDS PER DETAIL AT 30° FROM VERTICAL C.

**SKID PLACEMENT DETAIL FOR VITRIFIED CLAY PIPE**

\* FOR LONGER SLEEVES CONSULT CITY OF SANTA MARIA DEPT. OF PUBLIC WORKS.

RICHARD G. SWEET R.C.E. 44,213 EXP. 6/30/07 REVISIONS		1/20/05 DATE		<b>City of Santa Maria</b> <b>Standard Drawing</b>	
		BY APP DATE		DESCRIPTION: <b>STEEL SLEEVE DETAIL</b>	
DRAWN BY: N.C.		DATE DRAWN: 8/69	SCALE: NONE	STANDARD NUMBER <b>MS-11</b>	
			SHEET 1 OF 1		